

EMPOWERING INDUSTRIES SINCE 1981



ASSOCIATED INDUSTRIAL CONCERN

Your Trusted Partner For Reliable
Industrial Solutions



164/5 Mariswamappa Lane, S.J.P Road
Cross, Bangalore - 560002



+91 8970256600
+91 8792142852



www.aicindustrialsolutions.com

A I C



TABLE OF CONTENTS

About Company

03

Our Products

08

Fasteners

09

Flanges

20

Valves

25

Pipes

32

Pipe Fittings

37

Bearings

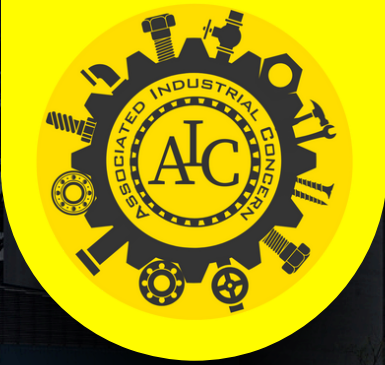
43

Trading Items

46

Contact

51



ABOUT US

WELCOME TO ASSOCIATED INDUSTRIAL CONCERN

Established In 1981 In Bangalore, Associated Industrial Concern Has Been A Trusted Name In The Industrial Components Sector For Over 40+ Years. With A Diverse Portfolio Of High-Quality Products, We Cater To Industries Such As Mining, Petroleum, Hospitality, Defense, Aviation, Railways, Construction, Steel Plants, Oil And Gas, Energy Sector And Government And Semi-Government Organizations. Our Mission Is To Empower Industries With Durable, Precision-Engineered Solutions That Ensure Reliability And Operational Excellence. Over The Decades, We've Built A Reputation For Delivering Unparalleled Quality, Timely Service And Innovative Solutions.



- 40+ Years Of Experience
- Diverse Product Portfolio
- Trusted By Leading Industries

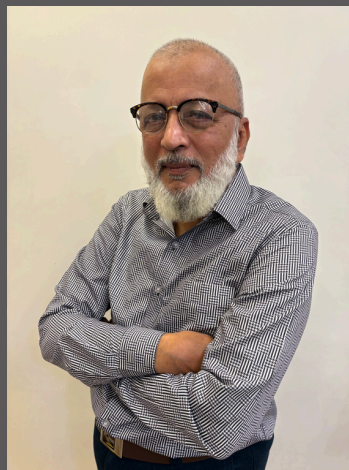


FOUNDER & MANAGING PARTNERS

THE VISIONARIES BEHIND AIC'S SUCCESS



ALIASGAR AJMERWALA
MANAGING PARTNER



KURESH AJMERWALA
FOUNDER & CHAIRMAN



ABDULTAYEB AJMERWALA
MANAGING PARTNER



40+ Years Of Experience
Diverse Product Portfolio
Trusted By Leading Industries



GUIDING OUR JOURNEY FORWARD

Vision

To Be The Preferred Partner For Industrial Solutions, Setting Benchmarks For Quality, Innovation And Customer Satisfaction.

Mission

To Deliver Premium Industrial Components That Empower Our Clients To Achieve Operational Excellence. We Strive To Provide Reliable Solutions, Exceptional Service And Build Lasting Relationships With Our Customers.

Core Values

Quality: Uncompromising Excellence In Every Product.

Reliability: Delivering Solutions You Can Depend On.

Innovation: Constantly Improving To Meet Evolving Industry Needs.

Customer Focus: Tailored Solutions To Meet Specific Challenges.



WHY CHOOSE US?

The Associated Industrial Concern Advantage

At Associated Industrial Concern, We Understand The Unique Challenges Faced By Industries. That's Why We Offer More Than Just Products—We Provide Tailored Solutions That Drive Efficiency, Reduce Complexity And Ensure Consistent Performance.

Key Differentiators:



Trusted Partnerships: Collaborations With Industry Leaders Like Jindal, Tata, Bosch, Mitutoyo, L&T Valves and Audco Ensuring Access To The Finest Industrial Components.



Customer-First Approach: A Deep Understanding Of Your Needs To Deliver Solutions That Perfectly Align With Your Goals



Unmatched Expertise: Over 40+ Years Of Experience In The Industry, Providing Reliable And Innovative Solutions.



Commitment To Quality: A Focus On Sourcing Only High-Quality Products That Meet The Highest Standards Of Performance And Durability.



OUR TRUSTED PARTNER NETWORK

We Partner With The Best To Ensure We Deliver Excellence Our Customers Can Always Rely on.



OUR PRODUCT CATEGORIES



Comprehensive Solutions For Every Industry

Our Diverse Product Portfolio Caters To Industries Demanding Precision, Durability, And Innovation. We Deliver High-Quality Components Designed To Meet Your Specific Needs.



FASTENERS



FLANGES



**BUTT WELDED & SOCKET WELDABLE PIPE
FITTINGS**



SEAMLESS PIPES



VALVES



BEARINGS



TRADING ITEMS



FASTENERS

Precision Fasteners For Every Industrial Need

Fasteners Are The Cornerstone Of Industrial And Structural Integrity, Ensuring Secure And Reliable Connections In Every Application. At Associated Industrial Concern, Our Fasteners Are Engineered For Precision, Strength, And Durability. Crafted From Premium Materials Like G.I (Galvanized Iron), M.S (Mild Steel), H.T (High Tensile), S.S (Stainless Steel) And Brass, Our Comprehensive Range Of Fasteners Meets The Highest International Quality Standards.



Durability: Made From Premium Materials To Ensure Long-Lasting Performance.



Corrosion Resistance: Suitable For Harsh Environments, Reducing Wear And Tear.



Precision Engineering: Designed To Fit Perfectly For Maximum Reliability.



Strong Connections. Secure Foundations

Comprehensive Range Of Fasteners

Bolts

Hex Bolts: Versatile Bolts For Industrial And Construction Needs.

Allen Bolts: Compact And Reliable Bolts For Secure Fastening.

U Bolts & J Bolts: Perfect For Pipe And Structural Support.

High Tensile Hex Bolt



Diameter	Length	Grade	Plating	Key Features
M4-M72	6mm-600mm	8.8, 10.9, 12.9	Black Phosphate, Zinc Plated, As Per Customer Requirement	High Strength, Corrosion-Resistant, Versatile For heavy-Duty use.

Hex Head Bolt Half Thread



Diameter	Length	Grade	Plating	Key Features
M4-M72	6mm-600mm	8.8, 10.9, 12.9	Black Phosphate, Zinc Plated, As Per Customer Requirement	Better Grip With A Half-Threaded Design.

Flange Bolt



Diameter	Length	Grade	Plating	Key Features
M4-M72	6mm-600mm	4.6,8.8	G.I,Cadmium, As Per Customer Requirement	Integrated Washer-Like Flange Under The Bolt Head For Load Distribution.

T Bolt



Diameter	Length	Grade	Plating	Key Features
M12 - M36	50 mm - 600 mm	8.8,10.9,B6,B7,B16	As Per Customer Requirement	Provides A Secure Hold Without Requiring Drilling.

WEDGE ANCHOR BOLT WITH NUT & WASHER



Diameter	Length	Finish	Key Features
8 mm - 24 mm	75 mm - 300 mm	White Zinc	Reliable anchoring for heavy-duty applications.

U Bolt



Diameter	Size	Grade	Plating	Key Features
M6-M20	25 mm - 600 mm	4.6, 8.8	Galvanized, As Per Customer Requirement	U-Shaped Bolt For Clamping Or Mounting Pipes And Rods.

Mushroom Head Square neck Bolt



Diameter	Length	Grade	Plating	Key Features
M6-M16	20mm-100mm	4.6, 8.8	Zinc, As Per Customer Requirement	Rounded Head With A Square Neck For Secure Locking In Wooden Beams.

Allen Bolts



Diameter	Length	Grade	Plating	Key Features
M6-M48	6 mm-600 mm	8.8, 10.9, 12.9	As Per Customer Requirement	Feature A Hexagonal Socket In The Head For Allen Key Tightening.

Csk Allen



Diameter	Length	Grade	Plating	Key Features
M12 - M36	6 mm-600 mm	8.8, 10.9, 12.9	As Per Customer Requirement	Flush Fit For Aesthetic And Secure Fastening.

Nut

Hex Nuts: Standard Nuts For Use With Bolts In Multiple Applications.

Locknuts: Designed To Resist Loosening Under Vibration And Torque.

Hex Nut



Diameter	Material of Construction	Plating	Key Features
2 mm - 72 mm	Mild Steel, High Tensile, Stainless Steel	Galvanized , Cadmium, As Per Customer Requirement	Standard Fastening Solution, Compatible With Most Bolts.

Hex Lock Nut



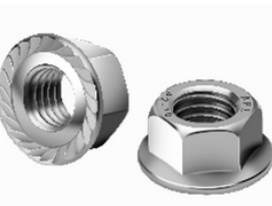
Diameter	Material of Construction	Plating	Key Features
2 mm - 72 mm	Mild Steel, High Tensile, Stainless Steel	Galvanized , Cadmium, As Per Customer Requirement	Prevents Loosening Due To Vibrations.

Hex NYLOCK Nut



Diameter	Material of Construction	Plating	Key Features
2 mm - 72 mm	Mild Steel, High Tensile, Stainless Steel	Galvanized , Cadmium, As Per Customer Requirement	Nylon Insert For Secure Locking And Resistance To Vibrations.

Hex Flange Nut



Diameter	Material of Construction	Plating	Key Features
2 mm - 72 mm	Mild Steel, High Tensile, Stainless Steel	Galvanized , Cadmium, As Per Customer Requirement	Integrated Flange For Better Distribution Of Pressure.

Dome Nut



Diameter	Material of Construction	Plating	Key Features
2 mm - 72 mm	Mild Steel, High Tensile, Stainless Steel	Galvanized, Cadmium, As Per Customer Requirement	Provides A Smooth, Aesthetic Finish, Protects Threads.

Wing Nut



Diameter	Material of Construction	Plating	Key Features
2 mm - 72 mm	Mild Steel, High Tensile, Stainless Steel	Galvanized, Cadmium, As Per Customer Requirement	Easy Hand Tightening, Tool-Free Operation.

Square Nuts



Diameter	Material of Construction	Plating	Key Features
2 mm - 72 mm	Mild Steel, High Tensile, Stainless Steel	Galvanized, cadmium, As Per Customer Requirement	Compact Design For Specific Industrial Uses.

Screws

Anchor Fasteners: Heavy-Duty Screws For Secure Wall And Ceiling Mounts.

Self-Drilling Screws: Simplify Installation With Built-In Drilling Capabilities.

Wing Screws



Diameter	Length	Grade	Plating	Key Features
14(6.3mm)	90mm/100mm /110mm	4.6, 8.8	Zinc Plated, Nickel Plated	Hand-Tightened Wing Design For Tool-Free Assembly.

Self Drilling Screws(SDDS)



Diameter	Length	Drilling Capacity	Plating	Key Features
#8 (4.2), #10 (4.8), #12(5.5)	1/2"-4"	#4 (upto 8mm), #5 (upto 12mm)	Zinc Blue	Drills And Fastens In One Step, Saving Time.

Self Tapping Screws



Diameter	Length	Material	Plating	Key Features
ST 2.9, ST 3.5, ST 4.2, ST 5.5, ST 6.3	3 mm -100 mm	Carbon Steel -SAE 1022/C1022, SAE 1010, SAE 1018 etc.	Zinc Plated, Nickel Plated	Cuts Its Own Thread In Metal Or Plastic.

Drywall Screws



Diameter	Length	Material	Plating	Key Features
#6 (3.5), #8 (4.2)	12 mm - 100 mm	Carbon Steel -SAE 1022/C1022	Zinc Black	Designed For Securing Drywall To Wooden Or Metal Studs.

Csk Philips Head Screw



Diameter	Length	Material	Key Features
3 mm - 8 mm	4 mm - 200 mm	Mild Steel, Stainless Steel	Countersunk For Flush And Aesthetic Finishes.

Pan Philips Head Machine Screw



Diameter	Length	Material	Key Features
3 mm - 8 mm	4 mm - 200 mm	Mild Steel, Stainless Steel	Used In Machines And Equipment Assembly.

Pan Combi Screw



Diameter	Length	Material	Key Features
3 mm - 8 mm	4 mm - 200 mm	Mild Steel, Stainless Steel	Combines Flat And Pan Head Features For Secure Fastening.

Truss head Philips Screw



Diameter	Length	Material	Key Features
3 mm - 8 mm	4 mm - 200 mm	Mild Steel, Stainless Steel	Large Head For Better Clamping.

Socket Button Head Screw



Diameter	Length	Material	Key Features
3 mm - 8 mm	4 mm - 200 mm	Mild Steel, Stainless Steel	Smooth, Rounded Head For Aesthetics.

Hexabular Socket Pan Head Torx Screw



Diameter	Length	Material	Key Features
3 mm - 8 mm	4 mm - 200 mm	Mild Steel, Stainless Steel	Torx Drive For Better Torque Transfer.

Pan Combi Head Built in Washer Screw



Diameter	Length	Material	Key Features
3 mm - 8 mm	4 mm - 200 mm	Mild Steel, Stainless Steel	Integrated Washer For Secure Fastening.

Slotted Csk Self Tapping Screw



Diameter	Length	Material	Plating	Key Features
ST 2.9, ST 3.5, ST 4.2, ST 5.5, ST 6.3	3 mm -100 mm	Carbon Steel -SAE 1022/C102 2, SAE 1010, SAE 1018 etc.	Zinc Plated, Nickel Plated	Ideal For Flush-Fitting Applications.

Self Drilling Pan Head Screw



Diameter	Length	Drilling Capacity	Plating	Key Features
#8 (4.2), #10 (4.8), #12(5.5)	1/2"-4"	#4 (upto 8mm), #5 (upto 12mm)	Zinc Blue	Combines Drilling And Fastening With A Pan Head.

Cross Resseded Pan Head Tapping Screw



Diameter	Length	Material	Plating	Key Features
ST 2.9, ST 3.5, ST 4.2, ST 5.5, ST 6.3	3 mm -100 mm	Carbon Steel -SAE 1022/C102 2, SAE 1010, SAE 1018 etc.	Zinc Plated, Nickel Plated	Easy Installation With A Cross-Recessed Drive.

Countersunk Philips Self Tapping Screw



Diameter	Length	Material	Plating	Key Features
ST 2.9, ST 3.5, ST 4.2, ST 5.5, ST 6.3	3 mm -100 mm	Carbon Steel -SAE 1022/C10 22, SAE 1010, SAE 1018 etc.	Zinc Plated, Nickel Plated	Cuts Its Own Threads While Providing A Flush Finish.

Soltted Pan Head Self Tapping Screw



Diameter	Length	Material	Plating	Key Features
ST 2.9, ST 3.5, ST 4.2, ST 5.5, ST 6.3	3 mm -100 mm	Carbon Steel -SAE 1022/C102 2, SAE 1010, SAE 1018 etc.	Zinc Plated, Nickel Plated	Classic Slotted Design For Manual Or Powered Tools.

Slotted Csk Head Screw



Diameter	Length	Material	Key Features
3 mm - 8 mm	4 mm - 200 mm	Mild Steel, Stainless Steel	Classic Design For Manual And Powered Tools.

Slotted cheese Head Screw



Diameter	Length	Material	Key Features
3 mm - 8 mm	4 mm - 200 mm	Mild Steel, Stainless Steel	Cylindrical Head Design For Strength.

Slotted Round Head Screw



Diameter	Length	Material	Key Features
3 mm - 8 mm	4 mm - 200 mm	Mild Steel, Stainless Steel	Classic Round Head For Manual Tightening.

Hex Socket Set Screw- Flat Point



Diameter	Length	Grade	Plating	Key Features
3 mm - 20 mm	8 mm - 80 mm	8.8, 10.9, 12.9	Black Phosphate, Zinc Plated, As Per Customer Requirement	Flat Point For Better Surface Contact.

Hex Socket set Screw- Cone Point



Diameter	Length	Grade	Plating	Key Features
3 mm - 20 mm	8 mm - 80 mm	8.8, 10.9, 12.9	Black Phosphate, Zinc Plated, As Per Customer Requirement	Cone Point For Precision And Secure Gripping.

Hex Socket Set Screw - Dog Point



Diameter	Length	Grade	Plating	Key Features
3 mm - 20 mm	8 mm - 80 mm	8.8, 10.9, 12.9	Black Phosphate, Zinc Plated, As Per Customer Requirement	Cylindrical End Ensures Alignment And Precise Position.

Hex Socket set Screw -Cup Point



Diameter	Length	Grade	Plating	Key Features
3 mm - 20 mm	8 mm - 80 mm	8.8, 10.9, 12.9	Black Phosphate, Zinc Plated, As Per Customer Requirement	Cup Point Design Improves Torque And Holding Power.

Washer

Spring Lock Washer



Diameter	Material of Construction	Plating	Key Features
2 mm - 72 mm	Mild Steel, High Tensile, Stainless Steel	Galvanized , Cadmium, As Per Customer Requirement	Prevents Loosening Due To Vibrations.

Plain Washer



Diameter	Material of Construction	Plating	Key Features
2 mm - 72 mm	Mild Steel, High Tensile, Stainless Steel	Galvanized , Cadmium, As Per Customer Requirement	Distributes Load To Prevent Damage To The Surface.

Special Fasteners

Stud rod both side threaded



Diameter	Length	Grade	Plating	Key Features
M6-M24	50mm-500mm	4.6, 8.8	Zinc, As Per Customer Requirement	Threaded On Both Ends For Versatile Connections And Assemblies.

Threaded Rods



Diameter	Length	Grade	Plating	Key Features
M6-M36	100mm-2000mm	4.6, 8.8	Zinc, Black Oxide, As Per Customer Requirement	Fully Threaded For Extended Reach And Structural Applications.

Our Range Of Fasteners Is Designed To Meet The Demands Of Modern Industries, Offering A Perfect Balance Of Quality, Durability And Versatility. From Construction And Automotive To Aerospace And Heavy Engineering, Our Fasteners Are Built To Withstand Rigorous Applications And Deliver Unmatched Performance. Manufactured With Precision And Adherence To Global Standards, They Ensure A Secure And Lasting Connection In Every Application.

At **Associated Industrial Concern**, We Pride Ourselves On Providing A Diverse Range Of Fasteners Tailored To Meet The Unique Demands Of Industries Worldwide. From Bolts And Screws To Pins And Washers, Our Fasteners Are Engineered For Durability, Reliability And Performance In Even The Most Challenging Environments.



FLANGES

Seamless Connections With High-Quality Flanges

Flanges Are Essential Components For Connecting Pipes, Valves, Pumps And Other Equipment In Piping Systems. At Associated Industrial Concern, Our Flanges Are Engineered For Precision, Strength And Durability, Ensuring Leak-Proof And Reliable Connections In Critical Industrial Applications. Manufactured Using Premium Materials, Our Flanges Meet International Quality Standards To Provide Unmatched Performance.



Leak-Proof Design: Ensures Safe And Secure Connections In Critical Systems.



High Durability: Built To Withstand High Pressure And Extreme Temperatures.



Precision Engineering: Designed For Seamless Fitting And Efficient Performance.



Strong Connections, Reliable Performance

Comprehensive Range Of Flanges

BS 10 Flanges

Flanges Designed As Per British Standard BS 10, Commonly Used In Low-Pressure Piping Systems. These Flanges Are Categorized Into Tables (D, E, F, H, J, Etc.), Each Representing Specific Pressure Ratings And Dimensions.

Types Of Flanges: Slip-On, Weld Neck, Blind, Threaded And Socket Weld.

Item Name	BS 10 Flanges
Size	15 mm - 600 mm
Standard	Table E, Table F, Table H, Table D, ND 10
Finish	Black, Varnished, Galvanised
MOC	Mild Steel, Stainless Steel
Key Features	<ul style="list-style-type: none">• Complies With British Standard BS 10 Specifications.• Suitable For Lightweight And Low-Pressure Applications.

ANSI B16.5

A Standard For Pipe Flanges And Fittings Covering Dimensions, Pressure Ratings (Classes 150-2500), And Materials For High-Pressure And High-Temperature Industrial Systems.

Item Name	ANSI B16.5
Size	15 mm - 1200 mm
Standard	Class 150, Class 300, Class 600, Class 900, Class 1500
Finish	Black, Varnished, Galvanised
MOC	Mild Steel, Stainless Steel
Key Features	<ul style="list-style-type: none">• Standard For Pipe Flanges And Flanged Fittings.• Covers Various Pressure-Temperature Ratings.

Types Of Flanges: Weld Neck, Slip-On, Socket Weld, Lap Joint, Threaded And Blind

Forged Carbon Steel Flanges

Durable, High-Strength Flanges Made From Forged Carbon Steel, Ideal For High-Pressure And High-Temperature Applications In Industries Like Oil, Gas And Petrochemicals.

Types Of Flanges: Weld Neck, Slip-On, Blind, Socket Weld, Threaded And Lap Joint Flanges.

Item Name	Forged Carbon Steel Flanges
Size	15 mm - 1200 mm
Standard	ASTM A105/JIS Class 150, Class 300, Class 600, Class 900, Class 1500
Finish	Black, Varnished, Galvanised
MOC	Mild Steel, Stainless Steel
Type	SORF, WNRF, BLRF, Hub Type SORF
Key Features	<ul style="list-style-type: none">• High Strength And Durability For High-Pressure Applications.• Excellent Resistance To Wear And Impact.

Weld Neck Flanges

Weld Neck Flanges Are Designed For High-Pressure And High-Temperature Applications. These Flanges Have A Long Tapered Hub That Provides Reinforcement And Ensures A Smooth Transition From The Flange To The Pipe, Reducing Stress Concentration And Ensuring Superior Performance.

Slip-On Flanges

Slip-On Flanges Are Simple To Install And Economical, Making Them Ideal For Low-Pressure Applications. They Are Slipped Over The Pipe And Welded Both Inside And Outside To Provide Strength And Prevent Leaks.



Socket Weld Flanges

Socket Weld Flanges Are Designed For Small-Diameter, High-Pressure Piping Systems. The Pipe Is Inserted Into The Flange's Socket, Which Ensures A Strong And Secure Connection When Welded.

Lap Joint Flanges

Lap Joint Flanges Are Used With Stub Ends And Are Ideal For Systems Requiring Frequent Disassembly. These Flanges Allow For Quick Alignment And Are Cost-Effective For Non-Critical Applications.





Blind Flanges

Blind Flanges Are Used To Seal The Ends Of Pipelines, Valves Or Pressure Vessel Openings, Effectively Preventing The Flow Of Fluids Or Gases. These Flanges Are Essential For System Maintenance And Testing.

Threaded Flanges

Threaded Flanges Are Used In Pipelines Where Welding Is Not Feasible Or Necessary. These Flanges Are Threaded To Match The External Threads Of The Pipe, Making Them Easy To Install And Ideal For Low-Pressure Systems.

Industries Served

Our Flanges Are Designed To Meet The Unique Demands Of Various Industries, Ensuring Performance, Safety And Durability.

- Oil & Gas: Ensuring Secure Connections In Pipelines And Refineries.
- Petrochemicals: Leak-Proof Solutions For Handling Aggressive Chemicals.
- Power Generation: Withstanding Extreme Pressures In Energy Plants.
- Water Treatment: Reliable Connections In Water Distribution Systems.
- Construction: Durable Components For Structural Piping Systems.

At **Associated Industrial Concern**, Our Flanges Are Crafted To Meet The Specific Demands Of Diverse Industries. From High-Pressure Oil Pipelines To Maintenance-Friendly Water Systems, Our Flanges Deliver Reliability, Durability And Precision.



VALVES

Trusted Valve Solutions for Every Critical Application

Valves Are Essential Components In Industrial Systems, Controlling The Flow Of Liquids And Gases With Precision And Reliability. At Associated Industrial Concern, Our Range Of Valves Is Designed To Meet The Demands Of The Most Challenging Environments. Manufactured Using High-Quality Materials Like Gun Metal, Cast Steel, Stainless Steel And Cast Iron, Our Valves Deliver Exceptional Performance Across A Variety Of Industries.



Precise Flow Control: Engineered To Ensure Accurate And Efficient Regulation Of Flow.



Durability: Built To Withstand High Pressure And Extreme Temperatures.



Corrosion Resistance: Suitable For Harsh Environments And Prolonged Use.



Control The Flow With Precision And Reliability.

Ball Valves

Ball Valves Are Designed For Quick And Reliable On/Off Flow Control. Their Quarter-Turn Operation And Leak-Proof Design Make Them Ideal For High-Pressure And High-Temperature Applications In Industries Like Oil & Gas, Water Treatment And Chemical Processing.

Ball Valves Available In Cast Iron, Cast Steel ,Stainless Steel And Gun Metal

Sizes		Dimensions			
mm	Inch	L	H	L/L	B(BSP)
15	1/2	83	53	110	1/2"
20	3/4	90	60	125	3/4"
25	1	97	65	125	1"
32	1 1/4	103	80	180	1 1/4"
40	1 1/2	115	85	220	1 1/2"
50	2	142	100	220	2"
65	2 1/2	160	125	270	2 1/2"
80	3	179	135	320	3"
100	4	217	155	320	4"



Flanged End Ball Valves

Flanged End Ball Valves Provide Secure, Leak-Proof Connections In Piping Systems With Flanged Ends For Easy Installation And Maintenance. They Ensure Efficient Flow Control And Are Ideal For High-Pressure And High-Temperature Industrial Applications.

Flanged End Ball Valves Available In Cast Iron, Cast Steel And Mild Steel

Sizes		Dimensions			
mm	Inch	L	H	L/L	T
15	1/2	178	53	110	12.7
20	3/4	190	60	125	12.7
25	1	203	65	125	12.7
32	1 1/4	229	80	180	16
40	1 1/2	254	85	220	16
50	2	267	100	220	19
65	2 1/2	292	125	270	19
80	3	330	135	320	19
100	4	356	155	320	22.2

3 Piece Ball Valves

3-Piece Ball Valves Consist Of Three Separate Parts (Two End Caps And A Central Body), Allowing Easy Disassembly For Cleaning, Maintenance, Or Repair Without Removing The Entire Valve From The Pipeline. They Offer Durability, Leak-Proof Performance And Are Widely Used In Industrial And Sanitary Applications.

3 Piece Ball Valves Available In Cast Steel And Stainless Steel

Sizes		Dimensions		
mm	Inch	L	H	L/L
15	1/2	70	40	110
20	3/4	75	40	110
25	1	95	56	145
32	1 1/4	105	65	145
40	1 1/2	115	78	185
50	2	125	78	185

High-Pressure Ball Valve

High-Pressure Ball Valves Are Durable, Leak-Proof Valves Designed To Regulate Flow In High-Pressure Systems. Featuring A Rotating Ball With A Bore, They Ensure Reliable Performance In Industries Like Oil, Gas, Petrochemicals And Hydraulic Systems.

High Pressure Ball Valves Available In Cast Steel And Stainless Steel



Sizes		Dimensions			
mm	Inch	L	H	L/L	B(BSP)
15	1/2	83	53	110	1/2"
20	3/4	90	60	125	3/4"
25	1	97	65	125	1"
32	1 1/4	103	80	180	1 1/4"
40	1 1/2	115	85	220	1 1/2"
50	2	142	100	220	2"
65	2 1/2	160	125	270	2 1/2"
80	3	179	135	320	3"
100	4	217	155	320	4"

Gate Valves

Gate Valves Are Linear Motion Valves Used To Completely Open Or Close The Flow In A Pipeline. They Are Commonly Used In High-Pressure Applications, Such As Water Supply Systems, Oil Pipelines And Power Plants, Ensuring Minimal Flow Restriction When Fully Open.

Gate Valves Available In Cast Iron, Cast Steel And Gun Metal

Sizes		Dimensions			
mm	Inch	L	H	T	W
15	1/2	130	165	14	100
20	3/4	150	165	16	100
25	1	160	175	16	100
32	1 1/4	180	190	18	125
40	1 1/2	200	240	18	160
50	2	230	285	20	160
65	2 1/2	290	305	20	200
80	3	310	345	22	200
100	4	350	385	24	250
125	5	400	410	26	250
150	6	480	470	26	315
200	8	600	540	26	400



Gate Valve



Globe Valves

Globe Valves

Globe Valves Are Ideal For Throttling And Precise Flow Control. Their Design Allows For Regulating Fluid Flow With Accuracy, Making Them Perfect For Applications In Chemical Plants, Steam Systems And High-Pressure Pipelines.

Globe Valves Available In Cast Iron, Cast Steel, Stainless Steel And Gun Metal

Sizes		Dimensions		
mm	Inch	L	H	T
50	2	178	350	16
65	2 1/2	190	365	16.5
80	3	203	375	21
100	4	229	445	22
125	5	254	500	22.5
150	6	267	535	23
200	8	262	650	24.5
250	10	330	790	26
300	12	356	850	27.5

Butterfly Valves

Butterfly Valves Are Lightweight And Compact, Offering Quick Flow Control With A 90-Degree Rotation Of The Disc. They Are Widely Used In Large-Diameter Pipelines, HVAC Systems And Water Treatment Plants For Their Cost-Effectiveness And Durability.

Butterfly Valves Available In Cast Iron, Cast Steel And Stainless Steel

Sizes		Dimensions			
mm	Inch	L	H	H1	L/L
40	1 1/2	33	57	95	180
50	2	43	65	105	180
65	2 1/2	46	70	115	265
80	3	46	81	125	265
100	4	52	101	146	265
125	5	56	118	164	265
150	6	56	129	179	265
200	8	60	155	215	
250	10	68	200	250	
300	12	78	215	275	



At **Associated Industrial Concern**, We Provide A Comprehensive Range Of High-Performance Valves Designed To Meet The Most Demanding Applications Across Industries Such As Oil & Gas, Water Treatment, Power Generation And Chemical Processing.

Trust Our Valves To Optimize Your Systems, Safeguard Your Operations And Deliver Long-Term Reliability In Every Application.



SEAMLESS PIPES

Strength and Precision with Seamless Pipes

Seamless Pipes Are Essential For Applications Requiring Strength, Durability And Precision. At Associated Industrial Concern, We Manufacture And Supply High-Quality Seamless Pipes That Meet The Stringent Demands Of Diverse Industries. Free From Welds And Seams, Our Pipes Ensure Consistent Performance, Even In High-Pressure And High-Temperature Environments. Available In Materials Like Mild Steel (M.S.), Stainless Steel (S.S.), Galvanized Iron (G.I.) And ERW (Electric Resistance Welded), Our Pipes Are Built To Last.



High Strength: Seamless Construction Provides Superior Mechanical Properties.



Uniform Thickness: Ensures Consistent Performance And Reduces Failure Risks.



Wide Material Range: Available In M.S., S.S., G.I. And ERW To Suit Varied Applications.



No Welds, No Weakness – Just Seamless Strength.

Mild Steel (M.S.) Pipes

Mild Steel Pipes Are Known For Their Versatility And Affordability. They Are Made From Low-Carbon Steel, Which Makes Them Ductile, Malleable And Easy To Weld. These Pipes Are Widely Used In General-Purpose Applications And Are Suitable For Carrying Liquids And Gases At Moderate Temperatures And Pressures.

Seamless Pipes

Seamless Pipes Are High-Strength, Uniform Pipes Made Without Welding Or Seams, Ensuring Durability And Smooth Flow. They Are Ideal For High-Pressure, High-Temperature And Critical Applications In Industries Like Oil, Gas And Power.

Item Name	Seamless Pipes
Size	15 mm - 600 mm
MOC	Cast Steel And Stainless Steel
End Connection	Butt Welded
Thickness	SCH 20 - SCH 160
Key Features	<ul style="list-style-type: none">• Superior Pressure And Temperature Resistance.• Ideal For High-Stress And Critical Applications.



ERW (Electric Resistance Welded) Pipes

ERW Pipes Are Manufactured By Fusing The Edges Of Steel Plates Using Electrical Resistance. Although These Are Not Entirely Seamless, Their Uniformity And Precision Make Them A Cost-Effective Alternative For Low To Medium-Pressure Applications.

Item Name	ERW Pipes
Size	15 mm - 600 mm
MOC	Black And Galvanised
End Connection	Threaded Or Butt Welded
Thickness	1.5 mm - 10 mm
Key Features	<ul style="list-style-type: none">• High Dimensional Accuracy And Uniform Wall Thickness.• Strong And Consistent Weld Quality.



Galvanized Iron (G.I.) Pipes

Galvanized Iron Pipes Are Coated With A Layer Of Zinc To Protect Against Corrosion And Rust. This Makes Them Durable And Suitable For Outdoor And Underground Installations. G.I. Pipes Are Lightweight Yet Strong, Making Them Ideal For Applications Where Longevity And Resistance To Environmental Factors Are Essential.

Spiral Welded Pipes

Spiral Welded Pipes Are Made By Spirally Welding Steel Strips, Providing High Strength And Flexibility. They Are Commonly Used In Water Transportation, Oil And Gas Pipelines And Structural Applications Due To Their Durability And Cost-Effectiveness.

Item Name	Spiral Welded Pipes
Size	600 mm - 1200 mm
MOC	Mild Steel
End Connection	Butt Welded
Thickness	As Per Customer Requirement
Key Features	<ul style="list-style-type: none">• High Strength And Durability Due To Spiral Welding.• Suitable For Large-Diameter And Long-Length Applications.



Stainless Steel (S.S.) Pipes

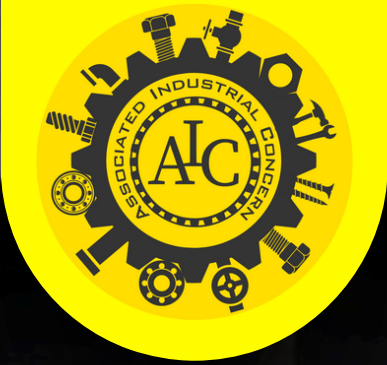
Stainless Steel Pipes Are The Preferred Choice For Applications Requiring High Corrosion Resistance, Strength And Durability. These Pipes Are Made From Alloys Containing Chromium, Which Forms A Protective Oxide Layer, Making Them Resistant To Rust And Oxidation.

Wall Thickness:

Wall Thickness Varies Depending On Pressure Requirements And Material Type. The Values Listed Above Cover A General Range For Seamless And ERW Pipes.

At **Associated Industrial Concern**, Our Seamless Pipes Are Designed To Power Industries With Strength, Precision And Reliability. Whether It's For High-Pressure Pipelines Or Structural Support, We Deliver Solutions That Exceed Expectations.

Choose Our Pipes For Robust Performance, Unmatched Durability And Seamless Operations Across Industries.



BUTT WELDED & SOCKET WELDABLE PIPE FITTINGS

Reliable Pipe Fittings For Seamless Transitions

Pipe Fittings Are Critical Components In Industrial Pipelines, Ensuring Smooth Transitions And Leak-Proof Connections. At Associated Industrial Concern, We Offer A Wide Range Of Butt Welded And Socket Weldable Pipe Fittings, Engineered For High-Pressure And High-Temperature Environments. Manufactured With Precision And Durability, Our Pipe Fittings Are Built To Meet The Toughest Industrial Challenges.



High Durability: Made From Premium Materials To Withstand Harsh Environments.



Perfect Fit: Precision-Engineered For Seamless Integration In Pipelines.



Reliable Performance: Designed To Handle Extreme Pressures And Temperatures.



Engineered For Precision, Built For Reliability.

Elbows 1.5D,3D,U BEND

Elbows Are Designed To Change The Direction Of Flow In Pipelines, Ensuring Smooth Transitions While Maintaining The System's Structural Integrity.

1.5D & 3D Elbows: Designed With A Bend Radius Of 1.5 Or 3 Times The Pipe Diameter, Suitable For Smooth Flow And Reduced Pressure Drop.

U-Bend: Provides A 180-Degree Direction Change, Commonly Used In Heat Exchangers And Compact Piping Systems.



Item Name	ELBOW 1.5D,3D,U BEND
Size	15 mm - 1200 mm
Material	Cast Steel, Mild Steel, Stainless Steel
Finish	Galvanised Or As Per Customer Requirement
Key Features	<ul style="list-style-type: none">• Facilitates Directional Changes In Piping Systems (45°, 90°, 180°).• Suitable For High-Pressure And High-Temperature Applications.

Tees (Equal And Reducing)

Tees Are Essential For Branching Flow In Pipeline Systems, Facilitating Distribution Across Multiple Directions.

Equal Tees: Distribute Fluid Or Gas Evenly Across Branches Of The Same Diameter.

Reducing Tees: Connect Pipes Of Different Diameters To Regulate Flow Between Branches.



Item Name	TEE
Size	15 mm - 1200 mm
Material	Cast Steel, Mild Steel, Stainless Steel
Finish	Galvanised Or As Per Customer Requirement
Key Features	<ul style="list-style-type: none">• Allows Branching Or Splitting Of Flow In Piping Systems.• Durable And Suitable For High-Pressure And High-Temperature Applications.

Reducers (Concentric And Eccentric)

Reducers Transition Flow Between Pipes Of Varying Diameters, Ensuring Smooth And Uninterrupted Fluid Or Gas Movement.

Concentric Reducers: Align The Centerline Of Both Pipes, Used In Vertical Piping.

Eccentric Reducers: Offset Alignment To Prevent Air Pockets In Horizontal Pipelines.

Item Name	Reducers Concentric And Eccentric
Size	15 mm - 1200 mm
Material	Cast Steel, Mild Steel, Stainless Steel
Finish	Galvanised Or As Per Customer Requirement
Key Features	<ul style="list-style-type: none">• Concentric Reducers Align The Pipe Centerlines, Ideal For Vertical Flow.• Used For Connecting Pipes Of Different Diameters While Maintaining Flow Efficiency.



Socket Weldable & Forged Threaded Fittings

Socket Weldable And Forged Threaded Fittings Are High-Strength Components Used In Piping Systems For Secure And Leak-Proof Connections. Socket Weld Fittings Are Welded Into Place, While Threaded Fittings Use Screw Connections, Making Both Ideal For High-Pressure And High-Temperature Applications In Industries Like Oil, Gas And Petrochemicals.



Item Name	Socket Weldable & Forged Threaded Fittings
Size	15 mm - 1200 mm
Material	Cast Steel, Mild Steel, Stainless Steel
Finish	Galvanised Or As Per Customer Requirement
Key Features	<ul style="list-style-type: none">• Socket Weld Fittings: Provide A Strong, Leak-Proof Connection For Small-Diameter, High-Pressure Systems.• Forged Threaded Fittings: Easy To Install And Suitable For Low-Pressure Applications Without Welding.

Miter Bend

Miter Bends Are Custom-Made Fittings Designed To Change The Pipeline Direction At Sharp Angles. They Are Created By Welding Cut Pipe Sections And Are Ideal For High-Pressure And High-Temperature Environments. Commonly Used In Industries Like Oil, Gas, And Power.



Item Name	Miter Bend
Size	600 mm - 5000 mm
Material	Mild Steel
Finish	Galvanised Or As Per Customer Requirement
Key Features	<ul style="list-style-type: none">• Formed By Cutting And Welding Pipe Segments At An Angle For Directional Changes.• Customizable For Specific Angles And Applications.

Caps

Caps Seal The Ends Of Pipelines, Protecting Them From Leaks, Contamination And Damage. Effective For Temporary Closures During Maintenance Or Permanent Sealing In Unused Pipelines.

At **Associated Industrial Concern**, Our Pipe Fittings Are Crafted With Precision And Engineered To Perform Under The Toughest Conditions. From Smooth Transitions To Reliable Sealing, Our Fittings Deliver Unmatched Reliability, Ensuring Uninterrupted Operations Across Industries.



BEARINGS

Precision Bearings for Smooth Operations

Bearings Are Essential Components That Reduce Friction Between Moving Parts, Ensuring Smooth And Efficient Operation In Machinery. At Associated Industrial Concern, Our High-Quality Bearings Are Engineered For Durability, Precision And Reliability. Whether It's For Heavy Machinery, Automotive Systems Or Aerospace Applications, Our Bearings Deliver Consistent Performance In Even The Most Demanding Environments.



High Durability: Designed To Withstand Heavy Loads And Prolonged Use.



Low Friction: Minimizes Resistance For Smooth And Efficient Operations.



Long Service Life: Built With Premium Materials For Extended Reliability.



Reducing Friction, Enhancing Performance.

Ball Bearings:

Ball Bearings Are Designed To Handle Both Radial And Axial Loads, Making Them Versatile For Various Applications.

Roller Bearings (Cylindrical, Tapered)

Roller Bearings Distribute Loads Across A Larger Surface Area, Offering Higher Load-Carrying Capacity.



Tapered Roller bearings



Self-Aligning Ball Bearings



Support Roller



Thrust Ball Bearings

Needle Bearings:

Needle Bearings Are Compact Yet Capable Of Supporting Heavy Loads, Ideal For Applications With Limited Space.

Thrust Bearings

Thrust Bearings Are Designed To Handle Axial Loads, Ensuring Smooth Rotation In Systems Requiring High Precision.



Cylindrical Roller Thrust Bearings



Needle Roller Thrust Bearings

Spherical Bearings

Spherical Bearings Allow For Angular Misalignment, Making Them Suitable For Systems Requiring Flexibility And Durability.



Pillow Block Bearings



Thrust Ball Bearings

Our Bearings Are Trusted Across Industries For Their Ability To Reduce Friction, Enhance Performance And Ensure Smooth Operations.

At **Associated Industrial Concern**, We Deliver Bearings That Enhance The Efficiency And Reliability Of Your Machinery. Whether It's A High-Load Industrial Application Or A Precision-Based Automotive Need, Our Bearings Provide The Foundation For Smooth, Efficient And Reliable Operations.



TRADING ITEMS

Versatile Tools And Components For Every Industrial Need

Our Range Of Trading Items Provides Essential Tools And Components To Support Daily Industrial Operations. From Precision Measurement Tools To Hydraulic And Pneumatic Systems, We Offer High-Quality Solutions Designed For Durability And Performance. These Products Cater To A Variety Of Industries, Ensuring Efficiency And Reliability In Maintenance, Assembly And Manufacturing Tasks.



Durable Construction: Designed To Withstand High Pressure And Temperature Fluctuations.



Precision Engineering: Ensures Perfect Fit And Optimal Performance.



Wide Range of Configurations: Available In Various Shapes, Sizes And Specifications To Suit Diverse Applications.



Tools You Can Trust, Performance You Can Rely On

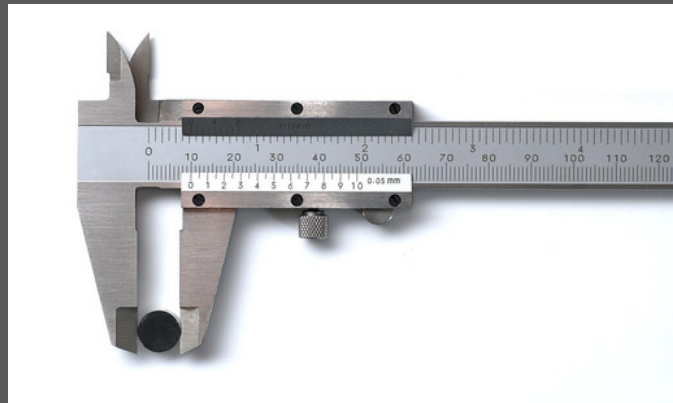
Analog Micrometer

Precision Measurement Tool For Accurately Gauging Small Distances, Critical For Mechanical And Machining Processes.



Analog Vernier Caliper

Reliable And Durable Instrument For Measuring The Internal And External Dimensions Of Objects With High Accuracy.



Digital Micrometer

Advanced Digital Tool Offering Precise Measurements With Easy-To-Read Displays, Ideal For High-Precision Engineering Tasks.



Black Rubber Expansion

Flexible Expansion Joints Designed To Absorb Movement And Vibrations In Piping Systems, Protecting Against Stress And Damage.



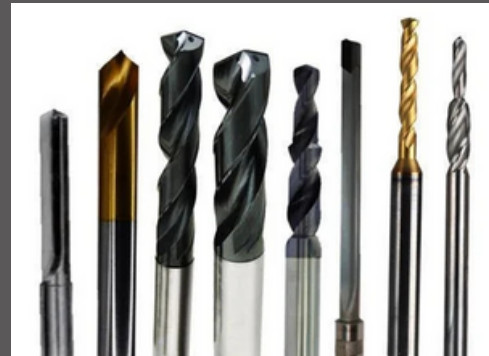
Digital Vernier Caliper

A Versatile Measuring Tool Providing Fast And Accurate Readings, Combining Traditional Functionality With Digital Convenience.



Drill Bits

Durable And Sharp Drill Bits For Drilling Through Various Materials, Including Metal, Wood And Concrete.



FRL Units

(Filter-Regulator-Lubricator Units) Essential For Conditioning Compressed Air Systems, Ensuring Optimal Pneumatic Tool Performance.



Hand Tools

Comprehensive Range Of Reliable Hand Tools, Including Wrenches, Pliers, Screwdrivers And Hammers, Designed For Industrial And Everyday Use.



Hydraulic Fittings

Robust And Leak-Proof Fittings For Connecting Hydraulic Hoses, Ensuring Seamless Integration In Hydraulic Systems.



Hydraulic Hoses

High-Quality Hydraulic Hoses Built To Withstand High Pressure, Facilitating The Efficient Transfer Of Hydraulic Fluid.



Pneumatic Cylinders

Reliable Pneumatic Cylinders Designed For Efficient Mechanical Movement In Automation And Industrial Processes.



Pneumatic Fittings

Durable Fittings That Ensure Secure And Leak-Free Connections In Pneumatic Systems.



Power Tools

High-Performance Power Tools Such As Drills, Grinders And Saws, Built For Heavy-Duty Industrial And Construction Applications.



Silica Gel

Silica Gel Absorbs Moisture To Keep Products Dry And Prevent Damage. It Prevents Mold, Corrosion, And Spoilage, Ensuring Product Longevity.



At **Associated Industrial Concern**, Our Trading Items Are Carefully Selected To Meet The Diverse Needs Of Industries Worldwide. Whether You're Measuring, Drilling, Or Maintaining, Our Tools And Components Provide The Reliability And Efficiency You Need To Keep Operations Running Smoothly.

Equip Your Business With Tools You Can Trust—Rely On Us For All Your Trading Item Needs.



YOUR BRIDGE TO INDUSTRIAL EXCELLENCE



164/5 Mariswamappa Lane, S.J.P Road Cross,
Bangalore - 560002



For Any Inquiries, Questions Or Commendations,
Please Call: +91 8970256600 /+91 8792142852



Email ID: info@aicindustrialsolutions.com



www.aicindustrialsolutions.com



Let's Build Success Together!